



FormFlex[®] cultivation gutters

A gutter solution for every crop and system

FormFlex[®] cultivation gutters are the smart choice for efficient and professional growing. Each gutter can be fully configured to meet the needs of different crops and growing conditions.

They are seamlessly produced from one single piece, in any desired length. Thanks to our mobile roll-forming machines, we can manufacture them on-site — anywhere in the world. This enables efficient installation with minimal handling on location.

The benefits of gutter-based cultivation

- ✓ Enables cultivation on non-arable or poor-quality soil
- ✓ Saves water, fertilizers, and nutrients through drain water reuse
- ✓ Provides identical water management for each plant
- ✓ Promotes optimal air circulation through the crop
- ✓ Allows better control over plant growth
- ✓ Reduces the risk of diseases and pests
- ✓ Improves working conditions by enabling work at an ergonomic height
- ✓ Increases labor productivity

These benefits result in higher production and better crop quality.

Overview of cultivation gutters



The FormFlex® AG gutter is the international standard in vegetable cultivation and is the most widely sold cultivation gutter in the world. This plateau-style gutter is available in virtually any desired width and offers various crop-specific modifications, such as semi-closed drain channels to prevent debris ingress or extra-deep channels for increased drainage capacity. Additionally, the gutter is available in different variants tailored to specific crops and cultivation methods.

Advantages:

- ✓ Substrate is fully supported
- ✓ Drain water is separated from the growing medium
- ✓ Due to the spacing, root growth in the drain channels is virtually impossible.
- ✓ Easy detection and removal of debris



The FormFlex® LG gutter is specially designed for bell pepper cultivation and stands out due to its high drainage capacity. Thanks to the almost sealed drain channel, debris ingress and algae growth are virtually impossible. In addition, the smart design ensures a strong profile with large span capability while using minimal material.

Advantages:

- ✓ Substrate is secured between the raised edges
- ✓ Highly stable system, both suspended and in combination with bay wide supports
- ✓ Substrate can be positioned as low as 10,5 cm above ground level
- ✓ High drainage capacity
- ✓ Sealed drain channel keep debris out and prevents growth of algae



The FormFlex® MG gutter is widely used in vegetable cultivation and is distinguished by its inward-sloping side walls. As a result, the drain channels are positioned slightly inward, helping to minimize the risk of debris entering the drain channels. This plateau-style gutter is available in various heights and virtually any desired width. Additionally, several crop-specific adaptations are possible, such as extra-deep water channels for increased drainage capacity, or a ridge on the top surface to help center a substrate container on the gutter.

Advantages:

- ✓ Substrate is fully supported
- ✓ Drain water is separated from the growing medium
- ✓ Due to the spacing, root growth in the drain channels is virtually impossible.
- ✓ Easy detection and removal of debris



The IV gutter stands out due to its drain channels positioned entirely beneath the gutter — effectively preventing any debris ingress. Drain water flows directly into the large drain channels below through pre-punched holes. Since the water is drained in darkness, algae growth is avoided. Additionally, the gutter is open at the bottom, allowing for easy cleaning when needed.

Advantages:

- ✓ Keeps debris out completely
- ✓ Drain water is discharged in darkness, preventing algae growth
- ✓ Drain water is separated from the growing medium
- ✓ No root growth in the drainage channels
- ✓ The completely smooth outer surfaces ensure maximum protection against plant damage



The FormFlex® GG (channel) gutter was originally developed for rose cultivation, but due to its high stability and excellent lateral support, it is now widely used in potted plants and medicinal cannabis as well. The perforated sides — which prevent root growth in the drain channels — make this gutter truly unique. It comes in virtually any width you need.

Advantages:

- ✓ Due to the perforated sides, root growth in the drain channels is virtually impossible.
- ✓ Debris ingress is prevented by the inward-angled sides of the gutter
- ✓ Excellent lateral support for the substrate
- ✓ High drainage capacity
- ✓ Drain water is separated from the growing medium

Overview of cultivation gutters



The side walls of the (channel) gutter provide excellent lateral support for the substrate or substrate container. The channel gutters are available in various designs and heights, and in virtually any desired width. The width of the gutter is tailored to the cultivation medium being used.

Advantages:

- ✓ Excellent lateral support for the growing medium
- ✓ High drainage capacity
- ✓ Drain water is separated from the substrate



The FormFlex® MK gutter is widely used in strawberry cultivation and, thanks to its flat bottom, it is well-suited for trays and containers. When combined with a drain hose and a strip of root-inhibiting fabric, it is also suitable for loose substrate and peat blocks. The MK (mid-channel) gutter is available in various heights and virtually any desired width.

Advantages:

- ✓ Optimal support for buckets, containers and grow bags
- ✓ Loose substrate can be placed directly into the cultivation gutter (optionally with ground cover and drain hose)
- ✓ Perfect integration of a drain hose (ø 40 mm)
- ✓ High drainage capacity



The FormFlex® PG gutter was developed for gerbera cultivation but is also suitable for other (potted plant) crops. The pots fit securely into the (pot) gutter, yet can be easily removed thanks to the specially designed slots. This galvanized pot gutter is often used in combination with a separate drainage gutter.

Advantages:

- ✓ Pots are firmly secured in place
- ✓ Special designed slots in the gutter allow for easy pot removal
- ✓ Pot spacing can be fully customized
- ✓ Integration of drip irrigation tube is possible
- ✓ When combined with a drainage gutter beneath the PG gutter, plant roots are completely separated from the drain water



The FormFlex® VG gutter is commonly used for drain water collection in pot gutter systems and rack-based cultivation. This wing-shaped drain gutter offers high capacity and flow rate, ensuring rapid drainage and minimizing the risk of contamination.

Advantages:

- ✓ Excellent drainage capacity
- ✓ Flexible positioning of the VG drain gutter when used with the pot gutter system
- ✓ Efficient water flow thanks to a relatively high flow rate

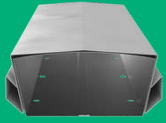


The FormFlex® VB gutter is designed for cultivation in trays, buckets, or containers and is primarily used in mobile systems, growing tables, and ebb and flow systems. This versatile gutter is available in various heights and configurations.

Advantages:

- ✓ Very flat bottom
- ✓ Bottom and sidewall angles can be customized for specific applications
- ✓ Sidewall finishing available with folded edge or (rounded) bead

Overview of cultivation gutters



FormBase

The FormFlex® FormBase combines a closed, steel carrier with a loose, seamlessly fitted plastic top layer — the 'Second Skin' — which ensures fast and clean drainage of water. The robust carrier is engineered using smart material choices, allowing it to handle heavy loads and wide spans with ease. Only the plastic top layer comes into contact with the drain water, ensuring a clean and hygienic system. Algae and fertilizer residues hardly adhere to the smooth surface, making cleaning quick and effortless. The top layer is resistant to aggressive cleaning agents such as chlorine, hydrogen peroxide, and high-pressure washing. The gutter is compatible with all common substrates and substrate trays.

Advantages:

- ✓ Split-function design combines a steel carrier with a replaceable plastic top layer
- ✓ Supports heavy loads over large spans — exceeding traditional gutter performance
- ✓ Algae and fertilizer residues hardly adhere, making cleaning effortless
- ✓ Smooth top layer is resistant to aggressive cleaning agents such as chlorine, hydrogen peroxide, and high-pressure washing



Second Skin

The Second skin is a specially designed plastic top layer that completely encloses and shields the cultivation gutters. This rigid layer cannot bend or wrinkle, ensuring optimal water drainage. Thanks to its smooth finish, algae, fungi, and fertilizer residues hardly adhere. The material is easy to clean.

Advantages:

- ✓ Extends the lifespan of (existing) cultivation gutters by many years
- ✓ Resistant to common cleaning agents and high-pressure cleaning
- ✓ Efficient and fast on-site production
- ✓ Custom-made with a seamless fit for any cultivation system
- ✓ UV- and impact-resistant
- ✓ Food-safe
- ✓ 100% recyclable

Supporting your Growth.

+31 (0)174 22 58 22
info@metazet.com

metazet.com



Scan me